

ARKANSAS

WORKFORCE DEVELOPMENT BOARD

ISSUE NO 1 | JANUARY 2023



The **Arkansas Workforce Development Board** (AWDB) is appointed by the governor and serves as a convener of state, regional, and local workforce system partners to enhance the capacity and performance of the workforce development system; align and improve employment, training, and education programs; and, through these efforts promote economic growth.

As a strategic convener, the Arkansas Workforce Development Board promotes partnerships and engages key stakeholders. Through the leadership of the Arkansas Workforce Development Board, the state can ensure that the workforce development system in Arkansas is customer-driven for both job seekers and employers. This effort includes aligning federal investments in job training, integrating service delivery across programs, and ensuring that the workforce system is job-driven and matches employers with skilled individuals.

The management of the Arkansas delivery system is a shared responsibility of the State, Local Workforce Development Boards, Chief-Elected Officials, core WIOA partners, other required partners, and Workforce Center operators.

**Board Chairman
Tom Anderson**



Page 2

Provides an overview of WIOA, Combined Plan Partners, and overall funding amount

Page 3

Understanding Arkansas' Labor Force Participation Rate (LFPR) and how we compare to surrounding states.

Page 4

Governor Sanders staff

Page 5—8

Governor Sanders Department Appointments

AWDB Social Media Links

Facebook— 65 followers
www.facebook.com/AWDBBoard

Twitter— 171 followers
[@AWDBBoard](https://twitter.com/AWDBBoard)



History of WIOA

- Manpower Development and Training Act (1962-1973)
- Comprehensive Employment and Training Act (1973-1982)
- Job Training Partnership Act (1982-1998)
- Workforce Investment Act (1998-2014)
- Workforce Innovation and Opportunity Act (2014—present)

WIOA is landmark legislation that is designed to strengthen and improve our nation's public workforce system and help get Americans, including youth and those with significant barriers to employment, into high-quality jobs and careers and help employers hire and retain skilled workers.

WIOA requires states to strategically align their core workforce development programs to coordinate the needs of both job seekers and employers through combined four-year state plans with greater flexibility than its predecessor program (WIA).

The Workforce Innovation and Opportunity Act (WIOA) was signed into law on July 22, 2014.



Constructed between 1899 and 1915

Arkansas has a **Combined State Plan**.

We are required to have **Core Partners**, and under a combined state plan we are required to have one or more of the Partner Programs.

Workforce Services gets approximately \$17M+ of WIOA funding that gets disseminated to 10 Local Workforce Boards.

Title I

- ***Workforce Development Activities***

Title II

- ***Adult Education and Literacy***

Title III

- ***Wagner-Peyser***

Title IV

- ***Rehabilitation Services and Services for the Blind***

Overview of Arkansas' Labor Force Participation (LFP)

	Nov 2022	Oct 2022	Nov 2021	Chg From Oct 2022	Chg From Nov 2021
Civilian Labor Force	1,351,744	1,353,161	1,331,333	-1,417	20,411
Employment	1,302,339	1,304,631	1,287,392	-2,292	14,947
Unemployment	49,405	48,530	43,941	875	5,464
Unemployment Rate	3.7%	3.6%	3.3%	0.1%	0.4%
Labor Participation Rate	56.6%	56.7%	56.3%	-0.1%	0.3%
U.S. Unemployment Rate	3.7%	3.7%	4.2%	0.0%	-0.5%

Source: U.S. Bureau of Labor Statistics, Current Population Survey. More information about the data is available at <https://www.bls.gov/cps/definitions.htm>

The key difference between the unemployment rate and the labor force participation rate is the participation rate measures the percentage of Arkansans who are in the labor force, while the unemployment rate measures the percentage within the labor force that is currently without a job.

Arkansas' Labor Force Participation Rates (Seasonally Adjusted)
January 1976 – September 2022



Click on link for full presentation: <https://dws.arkansas.gov/workforce-services/news-info/labor-force-participation-rate/>

**All border states
(except Mississippi)
have higher LFP than
Arkansas.**

Arkansas' LFP peaked in the mid-1990's, reaching 64.2% in 1994.

Of the 43% eligible to work but not in the workforce, it is not all those receiving unemployment payments. In December there were about 3700 payouts.

In September 2022, Arkansas had the 3rd lowest LFP (56.2%) in the country behind NM, MS, and WV.

Election results

Arkansas unofficial totals
latest available before
time and because of
an extraordinary early end

Sanders wins governor's race

**GOVERNOR-ELECT
SARAH HUCKABEE SANDERS**



OPPORTUNITY TICKET CANDIDATE



AR-GOV

Youngest Governor in the country

First female Governor in Arkansas history

Gubernatorial victory
makes history in state

**CHIEF OF STAFF DESIGNATE
GRETCHEN CONGER**



GOVERNOR'S OFFICE



SENIOR STAFF APPOINTMENTS

GOVERNOR'S OFFICE



ALEX FLEMISTER
DIRECTOR OF BOARDS &
COMMISSIONS DESIGNATE



ALEXA HENNING
COMMUNICATIONS DIRECTOR



JAMIE BARKER
LEGISLATIVE DIRECTOR
DESIGNATE



KELLY EICHLER
DEPUTY CHIEF OF STAFF DESIGNATE



JUDD DEERE
DEPUTY CHIEF OF STAFF DESIGNATE



JACK SISSON
POLICY DIRECTOR
DESIGNATE



MARY ASHLEIGH HARPER
GOVERNOR'S MANSION ADMINISTRATOR



VU RITCHIE
CHIEF LEGAL COUNSEL



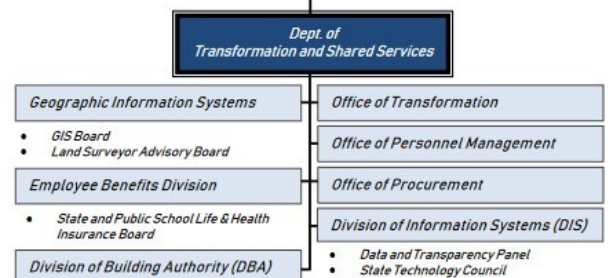
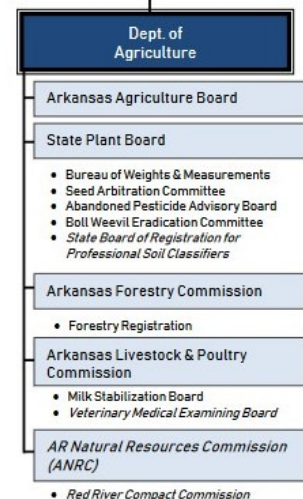
LESLIE FISKEN
DIRECTOR OF CABINET AFFAIRS
DESIGNATE

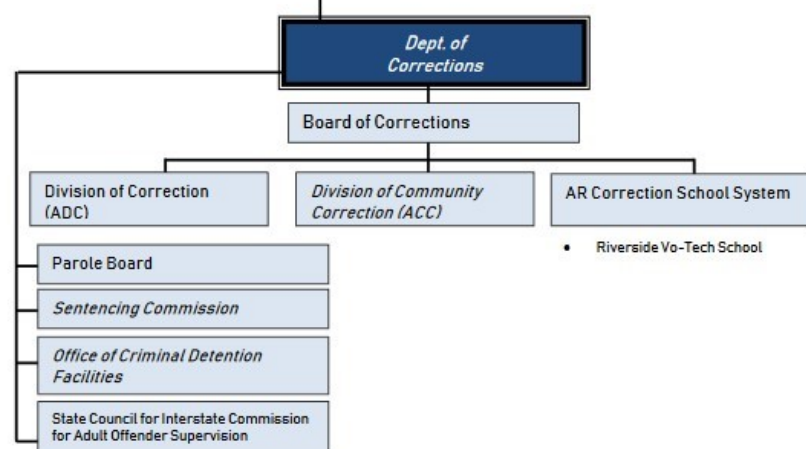
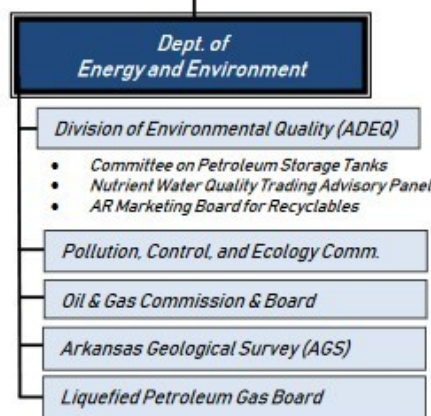
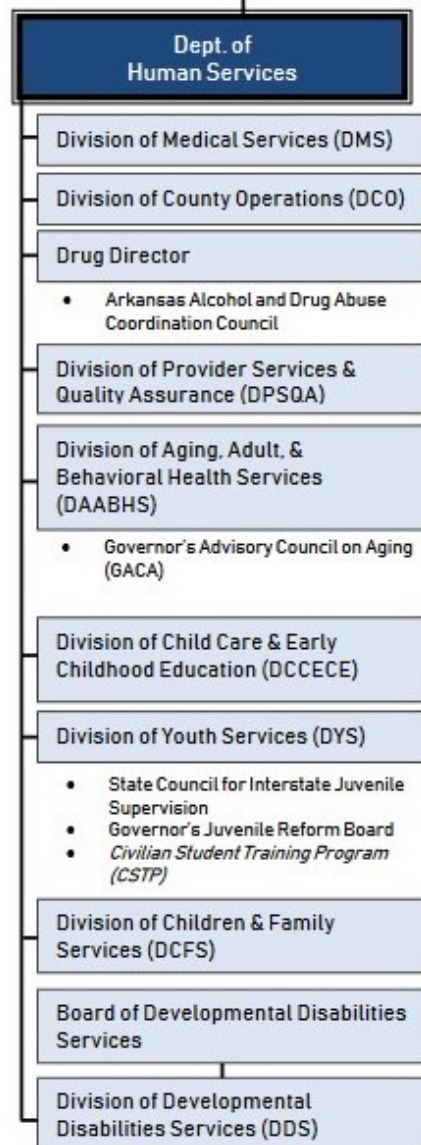


JORDAN POWELL
DIRECTOR OF PUBLIC AFFAIRS



CABINET SECRETARY APPOINTMENTS







Dept. of Health

Division of Health Related Boards and Commissions

Licensing & Regulation

- State Medical Board
- State Board of Nursing
- State Board of Examiners of Alcoholism & Drug Abuse Counselors
- State Board of Examiners in Speech Language-Pathology & Audiology
- Arkansas Psychology Board
- Arkansas Board of Examiners in Counseling
- State Board of Chiropractic Examiners
- State Board of Dental Examiners
- State Board of Physical Therapy
- State Board of Acupuncture & Related Techniques
- Dietetics Licensing Board
- State Board of Optometry
- State Board of Pharmacy
- Arkansas Board of Podiatric Medicine
- State Board of Athletic Training
- Arkansas Board of Hearing Instrument Dispensers
- Arkansas Board of Dispensing Opticians
- Social Work Licensing Board

Advisory

- Spinal Cord Commission
- Prescriptive Authority Committee
- Tobacco Prevention & Cessation
- Lay Midwife Advisory Board
- Emergency Medical Services Advisory Council
- Arkansas Orthotics, Prosthetics, & Pedorthics Advisory Board
- Medical Ionizing Radiation Licensure Committee
- Universal Newborn Hearing, Screening, Tracking & Intervention Advisory Board
- Drinking Water Advisory & Operator Licensing Committee
- Breast Cancer Control Advisory Board
- Cervical Cancer Task Force
- Advisory Council to the Arkansas Youth Suicide Prevention Council
- Prescription Drug Monitoring Advisory Committee
- Child Health Advisory Committee
- Marine Sanitation Advisory Committee
- State Board of Sanitarians
- Advisory Board for Interpreters Between Hearing Individuals who are Deaf, Deafblind, Hard of Hearing, and Oral Deaf
- Advisory Committee on Healthcare Acquired Infections
- Kidney Commission
- Grade A Milk Program Advisory Committee
- Cosmetology Technical Advisory Committee
- Massage Therapy Technical Advisory Committee
- Committee on Plumbing Examiners

Minority Health Commission

- Minority Health Board

Surgeon General

State Board of Health

Tobacco Settlement Commission

Health Services Permit Agency

- Health Services Permit Commission

CABINET SECRETARY NOMINEE

DEPARTMENT OF EDUCATION



JACOB OLIVA



Dept. of Education

Division of Elementary and Secondary Education

- Board of Education
- Fiscal & Admin Services
- Educator Effectiveness
- Research and Technology
- Public School Accountability
- Academic Facilities and Transportation
- AR Better Chance Program (Pre-K)

Career and Technical Education

- Career & Technical Education

School for the Deaf and School for the Blind and Visually Impaired

- Board of Trustees for the ASD/ASBI

Division of Higher Education

- ADHE Coordinating Board
- AmeriCorps
- Veteran's Training and Education
- Northwest Technical Institute

MLK Commission & Board

Arkansas State Library & Board

Dept. of the Military

AR Military Department

CABINET SECRETARY NOMINEES



BRIGADIER GENERAL
JON STUBBS

THE ADJUTANT GENERAL,
ARKANSAS NATIONAL GUARD



MAJOR GENERAL
KENDALL PENN

SECRETARY, DEPARTMENT
OF VETERANS AFFAIRS

Dept. of Veterans Affairs

- Veterans Commission
- Veterans Services Division
- Veterans Cemetery Division
- Veteran Home Division

Veterans Child Welfare Service

Disabled Veterans Services Office

CABINET SECRETARY REAPPOINTMENT
SECRETARY OF LABOR AND LICENSING



DARYL BASSETT

**Dept. of
Labor and Licensing**

*Div. of Occupational & Prof. Licensing
Boards and Commissions*

State Board of Public Accountancy

*State Board of Licensure for
Professional Engineers and
Professional Surveyors*

*State Board of Registration for
Professional Geologists*

State Board of Barber Examiners

Real Estate Commission

State Athletic Commission

HVAC Licensing Board

Contractors Licensing Board

Board of Electrical Examiners

Fire Protection Licensing Board

*Appraiser Licensing and
Certification Board*

Motor Vehicle Commission

Auctioneer's Licensing Board

*Pawnbrokers Licensure
Commission*

*Professional Bail Bondsman
Licensing Board*

Towing and Recovery Board

Abstracters Board

State Board of Collection Agencies

*State Board of Architects,
Landscape Architects, and Interior
Designers*

Home Inspector Registration Board

Manufactured Home Commission

Elevator Inspection and Permits

Division of Labor

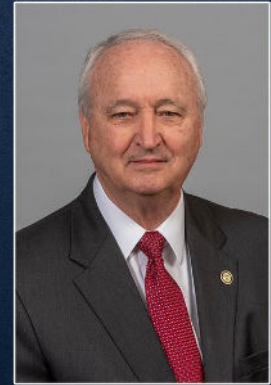
- Labor Standards
- Occupational Safety and Health Administration
- Mediation and Conciliation Services

*Worker's Compensation
Commission (AWCC)*



CABINET SECRETARY NOMINEE

DEPARTMENT OF FINANCE & ADMINISTRATION



LARRY WALTHER

**Dept. of
Finance and Administration**

Assessment Coordination Division

Office of the Arkansas Lottery

Revenue Division

Income Tax Administration

Excise Tax Administration

Office of Motor Vehicle

Office of Field Audit

Office of Driver Services

State Revenue Office

Arkansas Racing Commission

Alcohol, Bev. Control Enforcement

Alcohol, Bev. Control Division

- Medical Marijuana Commission

Office of Child Support Enforcement

Arkansas Tobacco Control & Board

*Governor's Developmental Disabilities
Council*

Division of Budget & Finance

- Office of Budget
- DFA Disbursing Officer/ Administrative Service
- Office of Accounting
- Intergovernmental Services
- Economic & Tax Research

CABINET SECRETARY NOMINEE

INSPECTOR GENERAL



ALLISON BRAGG

**Dept. of
Inspector General**

*Office of Medicaid Inspector General
(OMIG)*

Fair Housing Commission & Board

Internal Audit